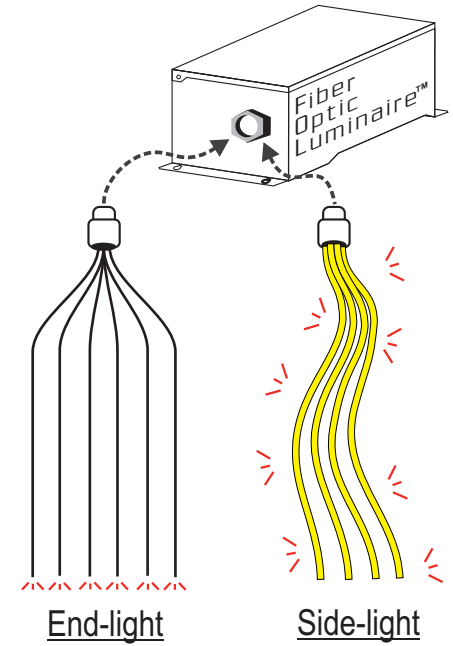
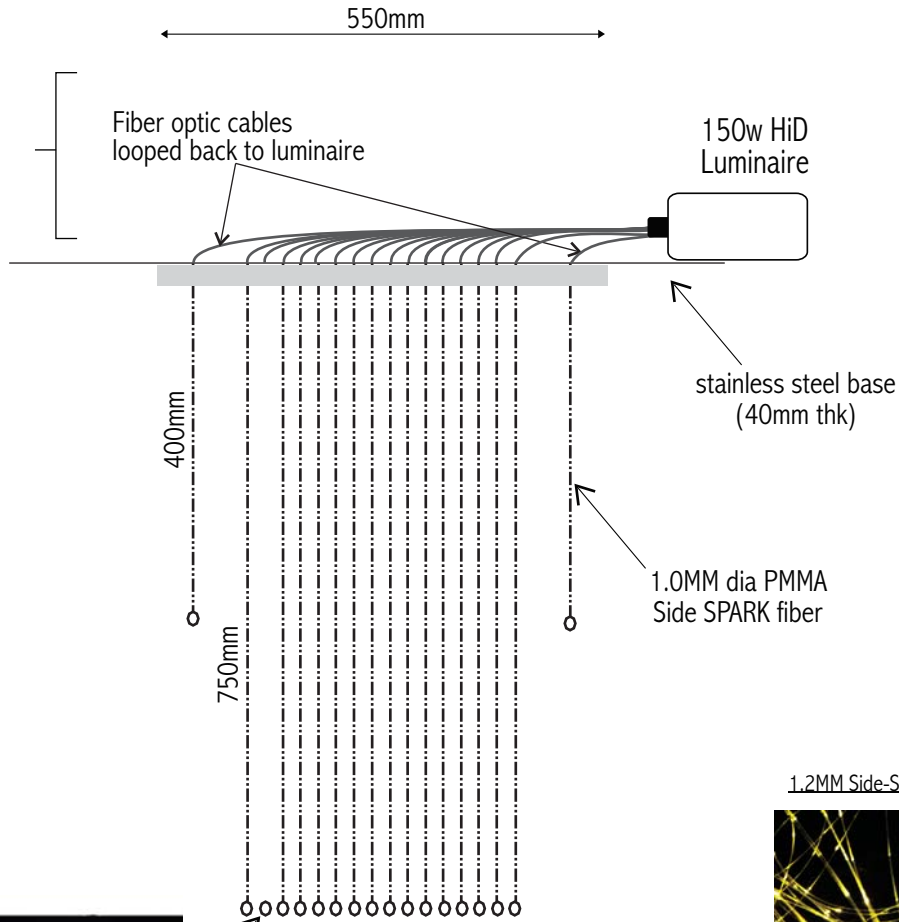
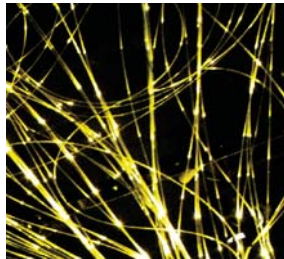


side elevation

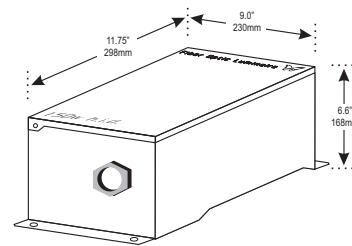


spheres (20mm or 30mm)

1.2MM Side-Spark Fibers



Dimensions

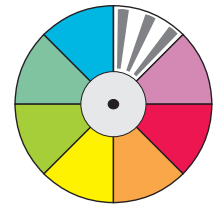


* Note : add an additional 3" (75mm) to length for optical port coupler

150W HID Luminaire



8-color dichroic disc (1 segment rain drop effect)



TIME Luminaries sdn bhd

#01-1B, Jln Hilir 1, Tmn Angsana Hilir
55100 Kuala Lumpur Malaysia
Tel : 603-92829096 Fax : 603-92825875
<http://www.neon-lighting.com>

Glass Fiber optic illumination for chandelier (tier drop)

Total Fiber Optic points = 350
Luminaire = 1 unit 150watt HID

Specification : 1.0MM dia Side~spark fibers (inconsistent break points) c/w clear jacket 2.1mm O/D and 150watt H.I.D. Fiber Optic Luminaire™ with 8-dichroic color changing with 1 segment rain drop animation .

* designs dimensions are in proportion to scale

© copyright reserved