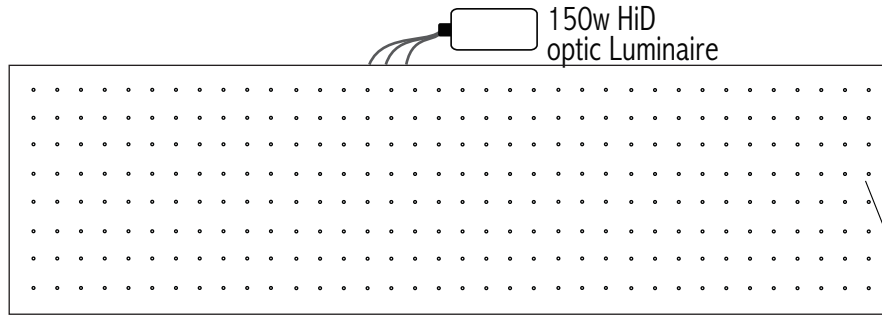
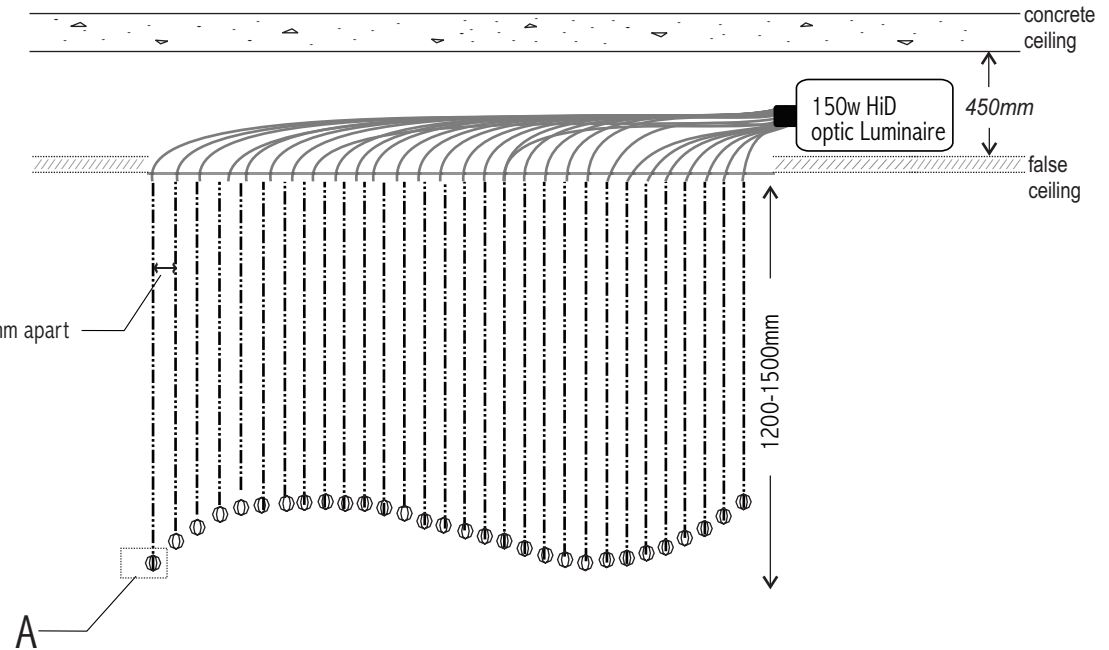


Optic chandelier - entrance

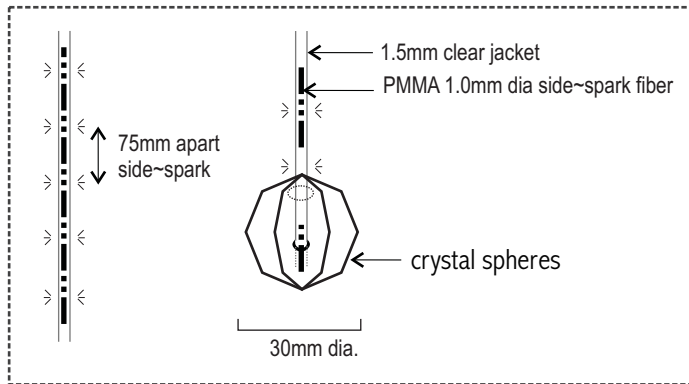
bottom elevation



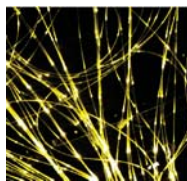
side elevation



A view

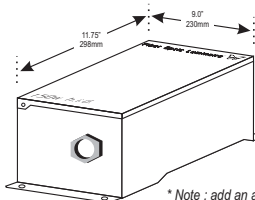


Side SPARK PMMA Fiber



1.0mm diameter with clear jacket (O/D 2.2mm)

Dimensions



150W HID Luminaire



* Note : add an additional 3" (75mm) to length for optical port coupler

8-color dichroic disc (1 segment rain drop effect)



FULL sparkle disc (continuous rain drop effect)



Project :	All measurements in MILLIMETERS	REVISE DATE
Fixture No :	Dimensions :	
Quantity : 1 no	Replacement Lamps : 150watt HQi-T NDL	
Area :	Total wattage : 300watt	
Description : Optic Chandelier	Finish :	
Fiber : Side-Spark 0.75mm dia (75mm spark)	weight :	
Optic Luminaire : 150watt HiD 4200K	Drawn : 18 / 9 / 12	
Effect : 7+1 Color Changing with Synch.	drawn by : ws	